



CIRENCESTER LIVESTOCK MARKET REPORT

TUESDAY 14TH APRIL 2026

9 BEEF COWS & BULLS

11.30 am – Auctioneer: Jon Pullin

A Limousin heifer (43mnths) & her Limousin x heifer calf to £2550 from M/s W F Scott & Son, Brinkworth. Aberdeen Angus x grazing cows to £1850 (272p/kg) & heifers to £1820 (322p/kg) from Mr P Joseph, Horpit. Incalf Beef Shorthorn cows sold to £1950 & £1910 from Ms E Edwards, Minety.

A few nice breeding bulls saw a pedigree Beef Shorthorn to £3100 from M/s S Horton & Son, Poulton. A strong pedigree Aberdeen Angus sold to £2800 from M/s P & T Reynolds, Chippenham & a pedigree Limousin to £2700 from M/s D & A Dando, Old Sodbury.



**Beef Shorthorn Breeding Bull at
£3,100 (400p/kg)**

313 STORE CATTLE

11.30 am – Auctioneers: Jon Pullin & Chris Voyce

Steers to £2470 Avg £1394 (383p/kg), Heifers to £1940 Avg £1348 (355p/kg)

A very pleasing entry saw another good trade but with the dropping beef price and increasing costs it was inevitable that the trade was going to ease.

The few short-term steers saw a good trade but easier on the week with the better sorts between £2200 - £2380 (355 - 370p/kg) topping at £2470 (358p/kg) for a Limousin steer from M/s J A Jones & Son, Cricklade with a British Blue steer to £2410 (357p/kg) from M/s W J Acreman & Sons, Cambridge.

The stronger medium-term steers again met another very good trade but also a shade easier trading between £1850 - £2000 (365 - 400p/kg) topping at £2270 (358p/kg) for Aberdeen Angus steers (13mnths) from Mr T Burden, Sarsden. The next level of steers still looked well sold between £1700 - £1900 (370 - 400p/kg).

More lesser steers & plainer types on offer in today's entry. The stronger grazing medium-term steers trading between £1600 - £1700 (380 - 420p/kg) with the next level £1450 - £1600 (380 - 420p/kg). The general medium-term steers saw the better sorts £1400 - £1500 (375 - 400p/kg) & the next level £1250 - £1400 (370 - 420p/kg).

No real short-term heifers on offer with the stronger medium-term heifers a good but also easier trade between £1800 - £1900 (350 - 370p/kg) topping at £1940 (366p/kg) for a Limousin from M/s D P & J Andrews, Hamfield. The next level being mostly native heifers were between £1700 - £1800 (330 - 350p/kg). The farming heifers still a decent trade between £1300 - £1500 (330 - 350p/kg) generally.

A larger entry of weaned calves continues to sell well and were no less with British Blue steers (6 - 8mnths) to £1130 (426p/kg) & £980 (467p/kg) from M/s Kingston & Sons, Tresham with their British Blue heifers (6 - 8mnths) to £910 (404p/kg). Stronger Beef Shorthorn steers (8 - 10mnths) to £1455 (400p/kg), Hereford steers (8mnths) to £1430 (368p/kg) & Aberdeen Angus steers (8mnths) to £1405 (390p/kg) from Mr E J Wooldridge, Stinchcombe. Aberdeen Angus steers (8 - 10mnths) from Mr T Richards, Marlborough sold to £1360 (432p/kg) with his heifers to £1145 (347p/kg). The younger sorts were probably the dearest with a run from M/s A & R Merrett, Selsley selling Simmental steers (4 - 6mnths) to £900 (487p/kg), Simmental heifers to £810 (426p/kg) & Aberdeen Angus steers to £910 (479p/kg).

STEERS / BULLS				HEIFERS			
Prices in Red are TB Restricted				Prices in Blue are Bulls / Rigs			
Prices in Green are TB Restricted Organic				Prices in Purple are Organic			
Age	£	p/kg	Vendor	Age	£	p/kg	Vendor
Hereford							
8	1430	367	E J Wooldridge	13 - 14	605	327	A G Woodward
8 - 9	1255	412	E J Wooldridge	17 - 19	1720	344	D J Gilder
10	1080	400	C & T Mayo	20 - 21	1630	362	A G Sansum & Sons
17	1310	359	D & H J Smith	25	1330	337	D & H J Smith
17	1815	390	D J Gilder	25	1640	307	S W Portch
18 - 20	1530	403	A G Sansum & Sons				
20 - 21	1625	353	B J Arkell & Partners				
Aberdeen Angus							
4 - 6	700	452	A & R Merrett	4 - 6	700	400	A & R Merrett
5 - 6	910	479	A & R Merrett	6 - 7	635	363	A C Daniell & Son
6	730	406	A C Daniell & Son	8 - 10	850	354	C & T Mayo
6 - 7	840	374	A C Daniell & Son	9 - 10	1145	347	T Richards
7	870	399	Kingston & Sons	11	1000	370	C & T Mayo
8	1405	390	E J Wooldridge	11 - 12	1700	378	T Burden
8 - 10	1360	432	T Richards	11 - 13	1775	355	T Burden
9 - 12	1760	396	T Burden	11 - 13	1100	349	C & T Mayo
9 - 13	1985	378	T Burden	13	1390	361	P Holdway
9 - 14	1155	392	C & T Mayo	14 - 22	1730	336	D J Gilder
12 - 13	2070	373	T Burden	15	1360	358	R & R Baker
13	2270	358	T Burden	16	1625	342	B Gough & Sons
13	1970	379	T Burden	17	1410	357	D & H J Smith
15 - 16	1350	387	R & R Baker	17 - 19	1625	369	M E Agri Ltd
16 - 22	1700	370	D J Gilder	18 - 22	1230	342	A G Sansum & Sons
17	1875	357	J A Jones & Son	19	1055	384	J P Voyce
17 - 18	1410	386	A G Sansum & Sons	19	1740	335	D & J Andrews & Son
18	1440	379	B Gough & Sons	22 - 27	1635	348	B J Arkell & Partners
18	1670	363	A G Sansum & Sons	23 - 25	1925	329	S W Portch
19	1960	350	D & J Andrews & Son				
21	1410	386	J P Voyce				
21 - 23	1660	373	B J Arkell & Partners				
23	1975	366	S W Portch				
23 - 24	1975	335	S W Portch				
Beef & Dairy Shorthorn							
8 - 10	1455	399	E J Wooldridge	9	1150	315	E J Wooldridge
9 - 10	1940	388	E Edwards	10	1455	338	E Edwards
13	1170	371	A G Sansum & Sons	19 - 20	1600	381	A G Sansum & Sons
18 - 21	1940	384	B Gough & Sons	21	1670	309	B Gough & Sons
				23	1650	359	D & J Andrews & Son
				23	1750	340	D & J Andrews & Son
Other Native & Rare Breeds							
17	1665	362	D J Gilder	15	1320	357	D & H J Smith
Limousin							
24	2470	358	J A Jones & Son	5	755	444	A & R Merrett
				22 - 23	1920	373	D & J Andrews & Son
				22 - 23	1910	357	D & J Andrews & Son
				23	1940	366	D & J Andrews & Son
Simmental							
5	900	487	A & R Merrett	5	810	426	A & R Merrett
15	1980	381	B Gough & Sons	19 - 23	1710	393	B Gough & Sons
16 - 20	1860	454	B Gough & Sons	19 - 24	1810	394	B Gough & Sons
British Blue							
6 - 8	890	456	Kingston & Sons	6 - 8	910	404	Kingston & Sons
6 - 8	980	467	Kingston & Sons	13	1300	388	P Holdway
8 - 9	1130	426	Kingston & Sons	17	1280	366	D & H J Smith
15 - 17	1440	384	D & H J Smith	17	1450	333	A Webb & Son
16	1790	426	A Webb & Son	18 - 21	1540	362	A G Sansum & Sons
19	1255	398	J P Voyce	21	1530	333	A Webb & Son
19	2410	357	W J Acreman & Sons	23	1710	353	B Gough & Sons
19	1490	392	A G Sansum & Sons	23 - 25	1790	320	S W Portch
19	1990	402	B Gough & Sons				
21 - 22	1960	377	K T & C F Jones				
23	2020	345	S W Portch				
24	2290	366	J A Jones & Son				
26	1820	360	A F Young & Sons				
Other Continental & Beef Breeds							
				12 - 13	1585	387	W J Acreman & Sons
				13	1120	350	C & T Mayo
				19	1430	371	A G Sansum & Sons
Friesian & Other Dairy Breeds							
14	680	278	T Munt				
15 - 19	1190	340	T Munt				
18 - 19	1410	336	A Webb & Son				

TUESDAY 5TH MAY 2026 – SPECIAL SALE OF COWS & CALVES

Entries invited

VOYCE PULLIN MARKETS LTD – CIRENCESTER MARKET

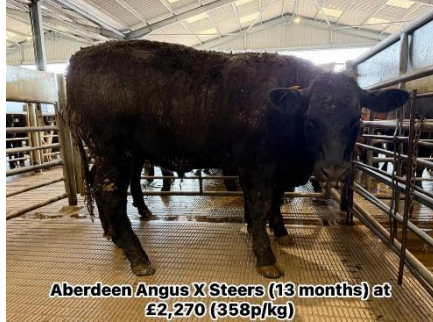
Cirencester Market Office Tel: 01285 869911 Fax: 01285 869514 (Market days Only)

Lydney Office: Tel: 01291 680068 Fax: 01291 689385 Oldbury Office: Tel: 01454 269486 Fax: 01454 415397

www.voycepullin.co.uk



**Limousin X Steer (24 months) at
£2,470 (358p/kg)**



**Aberdeen Angus X Steers (13 months) at
£2,270 (358p/kg)**



**42kg Prime Hoggets at
£185 (440p/kg)**

20 REARING & WEANED CALVES

10.30 am – Auctioneer: Richard Barrow
Rearing Calves Bulls to £320, Heifers to £228

An entry of mostly smaller and medium quality Hereford calves saw bulls to £320 from M/s N & D Freeth with most £200 - £260. Heifers from the same home to £228 most £120 - £165.

MANY MORE CALVES COULD BE SOLD ON A WEEKLY BASIS.

Market prices up on collection centres. For a free farm visit or phone call contact Richard Barrow 07885 298316 for advice.

TUESDAY 5TH MAY 2026 - SPECIAL SALE OF WEANED CALVES

THURSDAY 16TH APRIL 2026

603 PRIME HOGGETS

10.00 am – Auctioneer: Chris Voyce
Hogget SQQ 401.2p/kg Overall Average 375.6p/kg

A similar entry saw nearly ever breed on offer which saw a good trade throughout. The handyweights saw the better sorts trading over 425p/kg topping at 440p/kg £185 for 42kg from M/s J & J Daniell. The next level looked well sold on the week between 410 – 415p/kg with the lesser breeds either side of 400p/kg and well sold for what was on offer.

The medium weight (46 – 52kg) hoggs were a good trade but easier on the week but better than expected with the better sorts trading between 385 – 390p/kg topping at 391p/kg twice £180 for 46kg & £184 for 47kg from Mr R Kyte & M/s West Woodhay Farms respectively. The next level & lesser breeds traded mostly between £175 - £185.

The heavier sorts have taken the biggest hit again all week but were much better than expected with the better sorts £190 - £200 topping £206 for 53½kg from Mr O Thompson. The next level being £185 - £190.

Top Hogget Prices

Kgs	Vendor	£	p/kg
37	Netherby Farming Partners	150.00	405.0
39	H A Whitcombe	163.00	418.0
39.5	J E Herriot & Son	160.00	405.0
40	D S Waters & Son	160.00	400.0
42	J & J Daniell	185.00	440.0
42.5	W G Gibbens & Sons	174.00	409.0
43	A Grindle	186.00	433.0
44.5	W N & J W Knight	189.00	425.0
45.5	H Todd	193.00	424.0
46	R J Kyte Farms Ltd	180.00	391.0
46.5	D S Waters & Son	180.00	387.0
47	West Woodhay Farms	184.00	391.0
50	W N & J W Knight	192.00	384.0
52	P Baker	194.00	373.0
52.5	R J Kyte Farms Ltd	190.00	362.0
53.5	O F Thompson	206.00	385.0
57.5	H Todd	204.00	355.0

119 STORE & BREEDING SHEEP

10.30 am – Auctioneer: Richard Barrow

STORE HOGGETS (77) Again mostly clear up sorts continue to sell well. A few shorter lean hoggs sold to £150. The medium hoggs looked well sold between £120 - £130 with the smaller hoggs again looked well sold between £90 - £110.

NEXT THURSDAY 23RD APRIL 2026 – “CLEAR UP” SALE OF STORE HOGGETS

Entries required

STIFF JOINTED / JOINT ILL HOGGETS

WITH MANY STORE HOGGETS NOW BEING THE CLEAR UP SORTS PLEASE DECLARE ANY STIFF JOINTED / JOINT ILL HOGGETS

Any found after the sale will be resold at realisation.

EWES & LAMBS (40 & 62) A nice entry saw the few stronger sorts well sold with doubles to £360 (£120 a life) from Mr N Ponting. Ewes with younger lambs were £100 - £110 a life with singles to £260 (£130 a life), £245 (£122.50 a life) & £240 (£120 a life) from M/s Allspheres Farm.



Ewes with lambs at foot to £130/life

233 CULL EWES

Auctioneer: Chris Voyce
Overall Averages – Ewes - £167.40, Rams - £167.88

CULL EWES (201) The trade has eased nationally but still remarkably good and our trade up with the best of them. The few best ewes traded to £278 from Mr P Baker & £272 from M/s D T & R M Williams & Son. The stronger Continental & Suffolk ewes were all over £200 with most £210 - £230. The next level looking well sold between £175 - £190. The Mules saw the stronger medium sorts to £170 with the half meated ewes £140 - £160 & the next level £120 - £130. The stronger medium ewes also looked well sold between £150 - £165 & the half meated ewes £130 - £140. The small hill bred ewes saw the meat trading between £100 - £120, mediums £75 - £90 and plain £50 - £65. The plainer ewes were again another good trade with the bigger framed sorts £100 - £120 & mediums £90 - £100 and even the very plain £60 - £80.



Cull Ewes at £278

RAMS & HOGGETS (32) A good show of rams saw the strong meat rams £180 - £200 topping at £219. Smaller rams £140 - £150. Wethers to £150.

19 CATTLE

Auctioneer: Jon Pullin

Overall Averages – Beef Cattle – 311.7p/kg, Cows – 278.5p/kg

BEEF CATTLE (5) All Hereford heifers from M/s J I Jones & Sons saw a good trade between 310 – 314p/kg £1424 - £1703.

BARREN COWS & OTM CATTLE (14) Strong South Devon cows sold to 289p/kg £2395 & 280p/kg £1900 from M/s Ellipsis Farms. A run of Belted Galloway cattle from M/s National Trust saw cows to 278p/kg £1526. Their overage steers sold to 320p/kg £2061 & 318p/kg £2080 with all between 290 – 310p/kg. Cull bulls sold to 226p/kg £2165 for a Sussex from M/s R & J Burr.



South Devon X Cow at
£2,395 (289p/kg)

FORTHCOMING MARKETS & SALES

TUESDAY, 21ST APRIL 2026

30 Rearing Calves (10.30 am) **250 Store Cattle** (11.30 am)
Includes 18 Aberdeen Angus Steers & Heifers (8 – 13mths),
19 Aberdeen Angus x Steers & Heifers (20 – 23mths)

THURSDAY, 23RD APRIL 2026

1200 Prime & Store Hoggets (10.00 am)
Includes Special "Clear Up" Sale of Store Hoggets
300 Cull Ewes, 30 Beef Cattle & Barren Cows

MONDAY, 27TH APRIL 2026

TB Restricted Store Cattle & Barren Cows
Licences & Entries by 20th April

TUESDAY, 5TH MAY 2026

30 Rearing Calves (10.30 am) **250 Store Cattle** (11.30 am)
Includes Special Sale of Cows & Calves

THURSDAY, 11TH JUNE 2026

1200 Prime & Store Lambs & Hogget's (10.00 am)
250 Cull Ewes, 100 Pigs, 30 Beef Cattle & Barren Cows
Includes Three Counties Show Butchers Lamb Competition

PROPERTY & LAND FOR SALE

SMALLHOLDING OPPORTUNITY

The Barn, Wotton under Edge, Glos

A Barn with Full Planning Permission to convert to a residential dwelling and 10.12 acres of land and a further agricultural building.
For Sale by Informal Tender – Friday, 8th May 2026

EQUESTRIAN/AGRICULTURAL

The Liddicks, Longney, Glos

Permanent Pasture field with roadside frontage of 3.70 acres with dilapidated Livestock Shelter.
For Sale by Informal Tender – Friday, 15th May 2026.

ROCKHAMPTON, SOUTH GLOS

Rural Residential Opportunity

Agricultural Building with consent to convert to a one-bedroom home adjacent to and including 1.77 acres of permanent pasture with roadside frontage and no immediate neighbouring properties.
For Sale by Informal Tender – Friday, 30th May 2026

WOTTON UNDER EDGE, SOUTH GLOS

74.26 acres of Permanent Pasture

For Sale as a Whole or in two lots
For Sale by Informal Tender – Friday, 5th June 2026

Further details Oldbury Office 01454 269486

Particulars Available on Website

CHANGES TO TB CONTROL MEASURES

The Government is continuing to strengthen bovine TB (bTB) surveillance and control measures alongside the forthcoming refreshed bovine TB Strategy for England. This is supported by the 2025 Godfray Evidence Review update, which reiterates the importance of improving test sensitivity so that infected cattle not detected by the skin test alone can be identified and removed earlier.

What is changing

From 1st July 2026, compulsory interferon gamma (IFN- γ) testing will be extended to all herds in the Edge Area that experience a breakdown resulting in Officially Tuberculosis Free Withdrawn (OTF-W) status. Cattle with a positive IFN- γ test result will be removed, with the usual valuation and compensation procedures applying. Currently, compulsory IFN- γ blood testing only applies to certain TB breakdown herds in the High-Risk Area (HRA) and six-monthly surveillance testing parts of the Edge Area of England.

Since September 2025, we have offered farmers voluntary, government-funded IFN- γ tests in those areas experiencing a new OTF-W breakdown, and which do not qualify for a compulsory IFN- γ test.

OTF-W herds within the HRA, and those in six-monthly testing parts of the Edge Area with incidents becoming OTF-W before 1st July, which are not currently eligible for compulsory testing, will still be eligible for a voluntary, government-funded gamma test.

Using the skin test and gamma test together significantly increases our ability to detect infected animals, particularly in herds where bTB has already been identified. Earlier detection and removal of infected animals helps:

- reduce the spread of disease within affected herds
- protect neighbouring herds, other livestock and wildlife
- lower the risk of repeat breakdowns

Further information on gamma testing is available at: <https://tbhub.co.uk/tb-testing-cattle/blood-testing/>, which will be updated in due course.

As with other bovine TB control measures, DEFRA will monitor the impact of this change closely.

Renew your VAN Number

EU legislation requires a Veterinary Attestation Number (VAN) or Farm Assurance status to sell livestock for slaughter for export outside of the UK.

VAN numbers expire every 12 months
Don't forget to renew.

Speak to your local Veterinary Practise to renew.

Share your new VAN number with your mart.

ONE.LIVE.HUB
VAA